

ROCK CHIPPINGS



The Bulletin of the Woodland Hills
Rock Chippers, Inc.

Volume 64 Number 5
May 2023

Club Calendar

May 6th
Business Meeting
On Zoom
7 PM

May 13th
Thalia will have a
class on Wire
wrapped druse.
10AM

May 20th
Society Meeting
At the church
7PM
Program will be a
presentation by
Renee Newman
on diamond
crystals

Hello everyone,
I hope everyone is safe and healthy. Although I'm unable to be with everyone in person. I'm so very happy and excited to see so many new faces in our beloved WHRC.

I invite everyone to contribute an article or story to our newsletter. Its always fun and exciting to add to our knowledge by sharing and learning from each other's geological knowledge.

The May business meeting will take place at 7pm on May 6th via zoom. Our Club meeting will take place May 20th, starting at 6:30pm with our social gathering, with the main meeting taking place at 7pm. I'm looking forward to seeing everyone for a very informative and fun evening with a PowerPoint program on Diamonds by Renee Newman.

May you all have a safe and healthy month.
Sagi Salomon

Bulletin Index

Page 2
Presentation for May
Renee Newman

Page 3
Bench Tips
Club Showcase

Page 4
Classes
PatY Graduates!

Page 5
Let's go to a show!

Page 6
Birthdays and
Anniversaries
Gemstone of the
Month

Page 7
Business Meeting
Minutes

Page 8
Society Meeting
Minutes

Page 9
Corporate Officers

Membership Information

For any questions regarding membership in the Woodland Hills Rock Chippers please email Virginia Rotramel at whrc@rockchippers.org

Future Rockhounds of America

For any questions regarding membership in the FRA please email Thalia Goldsworthy at whrc@rockchippers.org

Regular club meetings are held at 7:00PM on the 3rd Saturday of each month at:
First United Methodist Church, 22700 Sherman Way, West Hills, CA 91307

Visit our website www.rockchippers.org
WHRC Editor: P.O. Box 205 Woodland Hills, CA 91365

Presentation for May

Diamond Crystals: Types, History, Sources & Current Issues

PowerPoint Description:

Diamonds were discovered in California in 1849 by prospectors panning for gold. This was about 18 years before the discovery of diamonds in South Africa. Besides briefly indicating the types of diamond crystals found in California, Renée's PowerPoint will include images and information on:

Where you can find diamonds in the U. S.

What American diamonds look like in the rough in order to help you spot them while prospecting and rock-hounding

The five basic diamond crystal types and their relative value from highest priced to lowest priced

Briefly the most important diamond sources beginning with India and ending with Canada

The most significant discoveries of rough diamond crystals

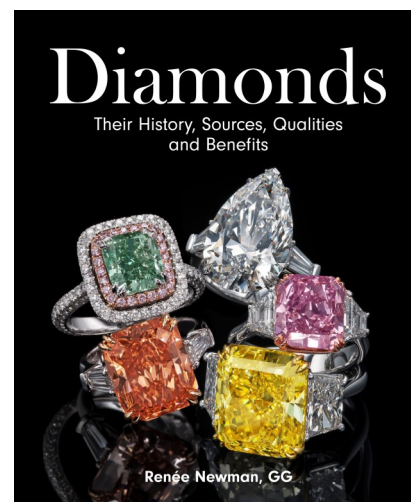
De Beers' new program to help artisanal miners sell diamonds ethically that are traceable from mine to market

Speaker Bio:

Renée Newman developed her interest in gems while conducting tours to Asia, South America and the South Pacific. Her passengers wanted information about the gems that were displayed in hotels and stores so she signed up for a colored stone grading course at the GIA in order to be able to answer their questions. The teachers there inspired her to complete the GIA colored stones and diamonds program.

After receiving a graduate gemologist diploma from the GIA, Renee was hired as a gemologist at a diamond wholesale firm in downtown Los Angeles. It provided hands-on experience grading diamonds and selecting colored gems and pearls for their jewelry. Armed with trade experience and gemological credentials, Renée decided to create books that showed readers how to visually evaluate the quality of gems. Her first book, the *Diamond Ring Buying Guide*, was published in 1989. Since that time, she has written thirteen more books on gems and jewelry, including the *Diamond Handbook* geared to trade professionals and her new large-format book *Diamonds: Their History, Sources, Qualities and Benefits*. Information about it is available at www.reneenewman.com/diamonds.htm

Renée's books are used as consumer guides, gemology course textbooks, sales training tools and appraisal references and are listed at www.reneenewman.com/books.htm. Renée will be selling her books at a discount and autographing them before and after her presentation. Bring cash or a check if you would like to purchase copies of them.



Bench Tips for May

Smart Solutions for Your Jewelry Making Problems

Amazon.com/author/bradfordsmith

Those of us who use paste solders sometimes find an old tube has dried out. There should be some way to recondition it, but what to use? Calling tech support at the suppliers didn't work. Either they don't know what to use or won't tell you the secret.

None of us likes to waste an expensive material, especially at \$20 a tube, so I've often experimented with ways to rejuvenate it. Mixing in a liquid flux doesn't work. When the liquid starts to boil off, it spatters the solder in all directions. But after several failed experiments, I finally found a way that does work. My secret ingredient is petroleum jelly. Mix in just enough to restore the consistency to something that's usable. If your solder is in a syringe, it can be difficult to get the plunger out. I find the easiest way is to poke a hole through the solder from the tip to the rubber plunger (a bur shaft was the right size for my tube). That lets in the air so you can slowly withdraw the plunger. Once the solder is out of the tube, you can easily add the petroleum jelly, mix it up, and spoon it back into the syringe.

When cutting jump rings from large gauge wire for chain making, you'll notice the saw leaves a small burr. An easy way to remove these is to tumble the rings with some fine-cut pyramids. Only a minute or so is needed. In fact, you don't even need a tumbler. I just put a handful of pyramids in a wide mouth plastic jar and shake for a bit. You can find these pyramids in the tumble finishing section of most jewelry supply catalogs.

After soldering a joint on say a bezel, have you ever seen it reappear when after soldering the bezel to the base plate? What's happening is that every time a piece is heated to the soldering temperature, the liquid solder alloys a little more into the base metal. This leaves a small furrow where the solder had been sanded off flush at the joint. To get rid of the furrow, you have to re-sand the joint area down to the bottom of the furrow. To avoid this when I have another soldering operation to follow, I try to leave a little extra solder on my joints. For instance when trimming off excess base plate from around a bezel, I leave a paper thickness of excess plate material whenever possible until I'm done with all soldering. Of course, this isn't always possible as when a soldering operation will prevent you from gaining access to an area for final sanding and polishing.

Smith, Bradford M.. Bench Tips for Jewelry Making: 101 Useful Tips from Brad Smith (Smart Solutions For Jewelry Making Problems) (pp. 59-60). Whimsey Wylde. Kindle Edition.

Club Display Case

CLUB SHOWCASE

We are often invited to bring our showcase display other club shows. Many thanks to Larry and Barbara Bradbury who have volunteered to take on this responsibility.

We were on display at the Conejo club's show on April 22nd– 23rd. We will have our display at The Culver City Rock & Mineral Club's 60th annual Fiesta of Gems show July 8 – 9, 2023..



to
ra

Next Month's Class

For the class we made a pendant with bead enhancements. Debbie, Anita, and Shanna all met at Thalia's home. Stones and beads that each brought or that Thalia offered for use were poured over to make the pendant. Thalia joined us in making her own pendant. It was a lot of fun with a lot of suggestions from each other for color combinations. Then we settled down to form the wire for holding our cabs. We all finished the main part but not the bead enhancements which we finished at home because of time restrictions. Note: This on occasion happens because of complexity of the project. Thalia is always ready to make extra time to anyone who needs help. We encourage others who are interested to please join us.

Last Month's Class

Our class on April 22nd was about adding beads to a standard cabochon pendant. The photo shows the class member's work up to the end of class. Each participant took their work home to finish as we ran out of time for the day. Photo items left to right by Shaana, Anita, Debbie, Thalia.



Paty Graduates!

Last Month, our Paty Mejorado attained the prestigious Gemological Institute of America located in Carlsbad California, with a Graduate Gemologist Diploma. The diploma fine-tuned my skills in evaluating gemstones by the 4Cs (color, clarity, cut, and carat weight), the International Diamond Grading System™, and the Colored Stone Grading and Identification System. Here is a link to the school: <https://www.gia.edu>

We congratulate her, and thank her for the shout-out to the WHRC in her acceptance speech. GO, PATY!!



Let's Go to a Show!

CFMS SHOW & CONVENTION

June 23, 24 & 25 - 2023

Lodi Grape Festival Grounds - 413 East Lockford Street Lodi California 95240

WEST COAST GEM & MINERAL SHOW

May 05-06-07-2023

Fri & Sat 10am to 6pm

Holiday inn Orange County Airport 2726 South Grand Avenue

Santa Ana California 92705

ANTELOPE VALLEY GEM & MINERAL CLUB'S MINERAL & JEWELRY SHOW

Saturday May 6, 2023 10-5 and Sunday May 7, 2023 10-5

Antelope Valley Fairgrounds 2551 West Ave. H Lancaster CA 93536

THE BEAD SOCIETY MAY 6th POP UP

Saturday May 6th 10 am– 4pm

St. Bede's Episcopal Church Parish Hall

3590 Grand View Blvd.

Los Angeles CA 90066

Birthdays: Larry & John



*Anniversaries:
Lisa & Mark*



Birthstones of May

Over the ages emerald has been the choice for May's birthstone, it's green color representing rebirth of the world with green plants renewing the landscape. The color has been even given a name for it's specific hue. - emerald green. Also the emerald name is used to describe Ireland = "the Emerald Isle".

Emerald is a member of the beryl family which includes aquamarine and heliodore, This stone requires special care. it's hardness is 6.5 to 7 on the Moh's scale - similar to quartz. It scratches relatively easily, It is brittle, and fractures easily because of the frequent inclusions and usual internal fractures. IT IS SENSATIVE TO HEAT - EVEN THE WARMTH OF DISH WASHING SOLUATIONS CAN AFFECT EMERALDS. Cool water, soap and a soft brush are recommended for cleaning.

Pure emeralds with clarity are very rare. Emeralds is one of the gemstones that man has been able to produce artificially. The chemical and physical properties of man-created stones are the same as natural stones. These are the deep green ones you see used for more inexpensive jewelry.



WHRC Business Meeting**Time: 7:09 pm****Date: April 1st****Location: Zoom Meeting Time*****Correction or approval of minutes:*** Minutes are okay, no changes.***Report of Treasurer:*** We made some money at the Silent Auction. We haven't received the statement yet.***Auditor:*** Still in the black***Bulletin/Publisher- John/Thalia:*** Everything is okay.***Classes/Workshops:*** Wire wrap cabochon with added beads. Class on April 22, 2023.***Courtesy/Hospitality:*** Not present.***Community Outreach - Thalia:******Corporate Administration - Debbie:*** Mailed the paperwork for the raffles. All necessary paperwork has been filed.***Display/Education:*** We need a theme for the showcase.***Federation Director:*** Virginia may go in June to the Local AFMS/CFMS show.***FRA - Thalia:*** No activity at the moment.***Insurance Debbie:*** Renewal is up-to-date.***Librarian - Shanna:*** Thalia has books that are being donated.***Membership:*** Shanna is looking into getting a new badge vendor. Debbie recommended two new vendors and Shanna will look into them.***Program:*** Turquoise DVD for April 15, 2023. May 20, 2023 - A Diamonds presentation by Renee Newman.***Show:*** Virginia is sending out contracts. Grand Prize preferably handmade.***WebMaster:*** Requesting a summary from the class participants. Shanna can take pictures.***New Business:*** BLM in San Diego needs input from Rockhounds about where they dig.***Old Business:*** Maureen may have some space for equipment.

Meeting Adjourned: 19:58

Patricia Mejorado*Secretary, Woodland Hills Rockchippers*

WHRC Society Meeting**Time: 7:15 pm****Date April 15****Location: 22700 Sherman Way, West Hills, CA 91303*****President : Sagi via Zoom******Flag Salute:*** Debbie***Guest:*** Vanessa D.***Program:*** Turquoise DVD***Correction or approval of minutes:*** Debbie approved minutes, there are no corrections.***Report of Treasurer:*** The raffle made some money. Everything is in order.***Auditor:*** Seeing the books in July.***Bulletin/Publisher- John/Thalia:*** Adding class summary to newsletter.***Classes/Workshops:*** April 22nd Wire Wrap Class. Contact Thalia for more details. May workshop is how to set-up the Audio/Video equipment.***Courtesy/Hospitality:*** Cards are up to date.***Community Outreach - Thalia:*** Show flyers are ready. Larry and Barbara are setting up the showcase at the Conejo Show.***Corporate Administration - Debbie:*** Federal and State - Returns are filed and the Attorney General Report is done.***Display/Education:******Federation Director:*** Virginia may go in June to the Local AFMS/CFMs show.***FRA - Thalia:*** No activity at the moment.***Insurance Debbie:*** Everything is up-to-date.***Librarian - Shanna:*** Nothing to report.***Membership - Virginia:*** We received two applications for new membership. Shanna is looking for a new badge vendor.***Program:*** Turquoise DVD. May is a Diamonds Program by Renee Newman.***WebMaster:*** John needs a new vendor list.***Show Committee:*** Raffle prizes are needed for the show. Virginia is sending out contracts.***New Business:*** Nothing to report.***Old Business:*** Maureen may store shop equipment.

Meeting Adjourned: 19:52

Patricia Mejorado*Secretary, Woodland Hills Rockchippers*



Woodland Hills Rock Chippers, Incorporated



Our organization, a non-profit corporation, was formed for educational and instructive purposes: to foster collection and study of minerals, to disseminate knowledge about them, to sponsor field trips to find them, to encourage the use of them in lapidary and faceting studies, etc. And to have one whale of a good time doing those things with all of our friends.



Regular meetings are held on the 3rd Saturday of each month at 7:00 p.m. Social time from 6:30 p.m.



Field trips are at various times throughout the month. Guests are always welcome to attend.



Elected Officers/Directors

| | | | |
|------------|------------------|-------------------|------------------|
| President | Sagi Salomon | Director At Large | Gene Berwager |
| Treasurer | Barbara Bradbury | Director At Large | Lillian Berwager |
| Secretary | Paty Mejorado | Director At Large | Larry Bradbury |
| Corp. Adm. | Debbie Hirlinger | Director At Large | John O'Brien |
| | | Director At Large | Shanna O'Brien |

Chairpersons and Appointed Positions

| | | | |
|-----------------------------|--------------------|----------------------|------------------------|
| Auditor..... | Virginia Rotramel | Membership | Virginia Rotramel |
| Bulletin Editor | John O'Brien | Outreach..... | Thalia Goldsworthy |
| Classes..... | Thalia Goldsworthy | Parliamentarian..... | Open |
| Courtesy/Hospitality... | Lillian Berwager | Programs | Thalia Goldsworthy |
| Custodian..... | Open | Publicity..... | Open |
| Fed Director..... | Virginia Rotramel | Shop | Pat Keene. Anita Niles |
| Alternate Fed Director..... | Open | Club Show Chair..... | Sagi Salomon |
| Field Trips..... | Committee | Asst.Show Chair..... | Virginia Rotramel |
| FRA..... | Thalia Goldsworthy | Ways and Means..... | John O'Brien |
| Historian..... | Gene Berwager | Webmaster..... | John O'Brien |
| Librarian..... | Shanna O'Brien | | |



Material from Rock Chippings may be duplicated for non-commercial purposes with appropriate credits. For commercial use, individual authors must be contacted for approval. Articles lacking bylines have been generated by the bulletin staff. Direct other questions to the Editor online to: www.rockchippers.org - or by mail to: WHRC Chippings Editor P. O. Box 205 Woodland Hills, CA 91365



May Society Meeting
Renee Newman on Diamonds
At the Church
Saturday, May 20th
7:00 pm



Address exchange Bulletins to: Editor at above address

Woodland Hills Rock Chippers, Inc.
MEMBER OF CALIFORNIA FEDERATION OF MINERALOGICAL SOCIETIES
P.O. BOX 205, Woodland Hills, CA 91365